

# Agricultural Janitorial & Safety Supplies

Stay Safe and  
Clean with  
Equipment and  
Clothing from  
**Impact!**

Stylish  
Safety  
Eyewear on  
Page 6!

**Impact**  
Everything.





## Plastic Bottle with Graduations

These basic bottles have graduations and dilution ratios embossed into them.

ITEM	DESCRIPTION	CS QTY
5024WG	NATURAL - 24 OZ.	96/CS
5023WG	NATURAL - 32 OZ.	96/CS



## House and Garden Trigger Sprayer

Great for liquid fertilizers and pest control applications.

ITEM	DESCRIPTION	CS QTY
4900HG	GREEN / WHITE	100/CS

# choosing the right Spray Bottle



**Size** – Consider the size of the job when determining which size of bottle is needed. Larger bottles require less frequent filling while smaller bottles are easier for harder to reach areas.

**Style** – Not all bottles are created equal. Hand Grip style bottles provide an ergonomic design and better grip. Bottles with

embossed graduation marks make chemical dilution quick and accurate.

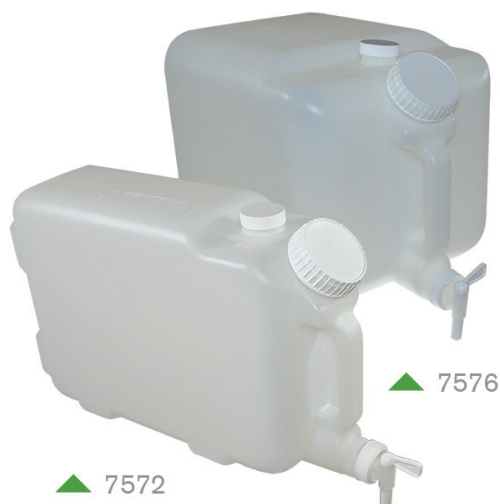
**Triggers** – Trigger sprayers are just as important as the bottles themselves. The trigger determines how the product is dispensed, whether it be a spray, stream or something in-between. Triggers are also available in chemical resistant materials for more aggressive chemicals. High output triggers dispense more chemical per stroke reducing user fatigue and labor costs.



## General Purpose Trigger Sprayer

Reliable sprayer with straight forward design, ensuring consistent function.

ITEM	DESCRIPTION	CS QTY
5800	WHITE / WHITE	200/CS
5802	BLUE / WHITE	200/CS
5806	RED / WHITE	200/CS
5900	WHITE / WHITE	200/CS
5902	BLUE / WHITE	200/CS
5904	GREEN / WHITE	200/CS
5906	RED / WHITE	200/CS



## E-Z Fill Container

Heavy-duty container with a 63mm angled-front opening for refilling.

ITEM	DESCRIPTION	CS QTY
7572	2 ½ GALLON	12/CS
7576	5 GALLON	6/CS



## Chemical Resistant Trigger Sprayer

The o-ring and 2-piece piston are chemical-resistant Viton® rubber.

ITEM	DESCRIPTION	CS QTY
4950	GRAY	100/CS

# Greenhouse Sanitation

## Equipment and supplies

Start with clean materials. All pots, flats, tools, etc. are to be steamed, washed, or chemically sterilized before being used in any greenhouse project.

The floor is not a desirable work surface. Keep hose ends hung up. Avoid putting plant material, containers, or tools on the floor or other contaminated surfaces. Do not use potting soil that had been spilled on the floor. Don't use the same cleaning tools on the floor and on benches.

Keep greenhouse surfaces sanitary, dry, and free of algae. Expanded mesh benches are good for cleanliness and air circulation. Lime can be used under benches on gravel floors if algae are persistent. Dirty cooling cell pads can harbor insects and diseases.

Source: Cornell AgriTech



## Stack Rack Storage & Dispensing Shelves

Space saving solution for your concentrates or ready-to-use chemicals.

ITEM	DESCRIPTION	CS QTY
7560	5-SHELF STACK RACK - BLUE	1/CS
7564	4-SHELF STACK RACK - BLUE	1/CS



## Deluxe Measuring Scoop

Great for distributing ice melt or floor sweeping compounds.

ITEM	DESCRIPTION	CS QTY
2405	WHITE	12/CS



## Jr. Pump-Up Sprayer and Foamer

Portable, hand held pump up sprayer for multi-purpose jobs.

ITEM	DESCRIPTION	CS QTY
7548	GRAY / TRANSLUCENT - 48 OZ. - SPRAYER	6/CS
7549	GRAY / TRANSLUCENT - 48 OZ. - FOAMER	6/CS



## All-Purpose Tank Sprayer

Suitable for applying mild chemical solutions.

ITEM	DESCRIPTION	CS QTY
7513	3-GALLON SPRAYER WITH CARRY STRAP	1/CS



## Chemical Resistant Tank Sprayer

This tank sprayer offers maximum chemical resistance for non-acids.

ITEM	DESCRIPTION	CS QTY
7522	2-GALLON TANK SPRAYER	1/CS

# greenhouse Health & Safety!

Health and safety is good business. A commitment to health and safety is one of the best ways for a nursery or greenhouse business to protect its greatest resource — its people. This type of commitment can:

- Create a better work environment
- Boost morale
- Help retain good workers
- Prevent injuries
- Increase worker participation in decision making
- Improve productivity and enhance customer service

# eliminate slips and Falls in Your Facility!

Keeping the area you are cleaning safe for customers and employees is imperative. That's why Impact offers various types of safety signage.

One of our newest and most unique is The Banana Cone. It's distinctive shape and size increase perception of a hazard 22 more times than a standard Wet Floor sign.

The Banana Cone is available in both a two-foot and three-foot height.

You can learn more by visiting [impact-products.com/banana](http://impact-products.com/banana)



## Wet Floor Sign

A lighter, more ergonomic wet floor sign.

ITEM	DESCRIPTION	CS QTY
9152E	ENGLISH ONLY	6/CS



## Wet Floor Sign - Vented

New hand holds allow easier positioning when wearing gloves.

ITEM	DESCRIPTION	CS QTY
9152BH	ENGLISH / SPANISH	6/CS



## Pop Up Safety Cone

Wall-mountable and portable, these metal-framed fabric cones store easily.

ITEM	DESCRIPTION	CS QTY
9182	POP UP SAFETY CONE BLACK/YELLOW	24/CS



## Pro-Guard® FIT 850 Series Safety Glasses

Allows wearers to customize the fit and feel to their exact preferences.

ITEM	DESCRIPTION	CS QTY
8501000	Clear Lens / Black UFX Frame	12 pr/bx; 12 bx/mstr
8501001	Gray Lens / Black UFX Frame	12 pr/bx; 12 bx/mstr
8501003	I/O Lens / Black UFX Frame	12 pr/bx; 12 bx/mstr



## Pro-Guard® FIT 821 Series Safety Glasses

Full polycarbonate frame and lens designed to better fit smaller facial sizes.

ITEM	DESCRIPTION	CS QTY
8003CCM	CLEAR LENS / CLEAR FRAME	12 PR/BX; 12 BX/MSTR
8210100	CLEAR AFX ANTI-FOG LENS / CLEAR FRAME	12 PR/BX; 12 BX/MSTR



## Pro-Guard® Classic 810 Series Safety Glasses

Lightweight, wrap-around design with blue tinted lenses that provide 99.9% UV protection. These glasses exceed ANSI Z87.1-2010 high impact requirements. Private labeling is available

ITEM	DESCRIPTION	CS QTY
8103004	Blue Lens / Blue Frame	12 pr/bx; 12 bx/mstr



## Pro-Guard® Classic 820 Series Safety Glasses

Integrated nose piece with a soft, non-slip rubber temple tips provides non-binding FIT. AFX anti-fog provides fogging 15 times longer than other anti-fog treatments Lenses provide 99.9% UV protection. Exceeds ANSI Z87.1-2010 high impact requirements. Private labeling available

ITEM	DESCRIPTION	CS QTY
8204002	Amber Lens / Amber Frame	12 pr/bx; 12 bx/mstr



## Pro-Guard® FIT 821 Series Safety Glasses

Economical wrap-around single lens provides full panoramic view. Integrated nose piece and soft, non-slip rubber temple tips provides non-binding fit. AFX Anti-Fog coating prevents fogging 15 times longer than other anti-fog treatments. Exceeds ANSI Z87.1-2010 high impact requirements. Lenses provide 99.9 UV protection. Private labeling is available.

ITEM	DESCRIPTION	CS QTY
8217007	Pink Lens / Pink Frame	12 pr/bx; 12 bx/mstr



## Pro-Guard® STYLE 830 Series Safety Glasses

Nose buds secure the glass and prevent slipping while providing a pillow soft fit. Curved lens provides full side protection without distracting seams. Temples adjust to four different lengths. AFX anti-fog coating prevents fogging 15 times longer than other anti-fog treatments. Exceeds ANSI Z87.1-2010 high impact requirements. Private labeling available.

ITEM	DESCRIPTION	CS QTY
8301002	Amber Lens / Black Frame	12 pr/bx; 12 bx/mstr





## Disposable Particulate Respirator

Double Shell construction, tight fitting seal provides comfort and safety.

ITEM	DESCRIPTION	CS QTY
7312B	DISPOSABLE RESPIRATOR	20/BX; 12 BX/MSTR



## Disposable Particulate Respirator with Exhalation Valve

Designed for use in hot, humid conditions while providing comfort and protection.

ITEM	DESCRIPTION	CS QTY
7314B	DISPOSABLE RESPIRATOR	10/BX; 12 BX/CS



## Pro-Guard® Disposable White Nitrile Powder Free General Purpose 4ML

Cleaning, assembly and small parts handling.

ITEM	DESCRIPTION	CS QTY
8643L	WHITE	100/BX; 10 BX/CS
8643M	WHITE	100/BX; 10 BX/CS
8643S	WHITE	100/BX; 10 BX/CS
8643XL	WHITE	100/BX; 10 BX/CS



## Protective Glove Dispenser

Molded in clear acrylic fit most 100-pack dispenser boxes of disposable gloves.

ITEM	DESCRIPTION	CS QTY
8615	CLEAR PLASTIC - 1 BOX	12/CS



## Pro-Guard® Disposable Black Nitrile Powder Free General Purpose 4ML

Cleaning, chemical splash and small parts handling.

ITEM	DESCRIPTION	CS QTY
8642L	BLACK	100/BX; 10 BX/CS
8642M	BLACK	100/BX; 10 BX/CS
8642S	BLACK	100/BX; 10 BX/CS
8642XL	BLACK	100/BX; 10 BX/CS



## Advanced Gator® Containers and Lids

Added Features like venting and cinches set these Gator's® apart from our basic containers. 6 air-venting passages provide up to 75% reduction in the force to remove a filled liner. Built-in poly bag cinches keep liners in place. Deeper wider bottom hand grip pockets slot for easier container dumping. Offset ridge design allows container to nest without jamming.

ITEM	DESCRIPTION	CS QTY
7732-1	32 GAL. - WHITE	6/CS
7732-11	32 GAL. - BLUE	6/CS
7732-11R	32 GAL. - BLUE RECYCLE	6/CS
7732-14	32 GAL. - GREEN	6/CS
7732-16	32 GAL. - YELLOW	6/CS
7732-3	32 GAL. - GRAY	6/CS
7732-6	32 GAL. - RED	6/CS
7733-1	32 GAL. LID - WHITE	6/CS
7733-11	32 GAL. LID - BLUE	6/CS
7733-14	32 GAL. LID - GREEN	6/CS
7733-16	32 GAL. LID - YELLOW	6/CS
7733-3	32 GAL. LID - GRAY	6/CS
7733-6	32 GAL. LID - RED	6/CS
7744-1	44 GAL. - WHITE	4/CS
7744-11	44 GAL. - BLUE	4/CS
7744-11R	44 GAL. - BLUE RECYCLE	4/CS
7744-16	44 GAL. - YELLOW	4/CS
7744-3	44 GAL. - GRAY	4/CS
7744-6	44 GAL. - RED	4/CS
7745-1	44 GAL. LID - WHITE	4/CS
7745-16	44 GAL. LID - YELLOW	4/CS
7745-3	44 GAL. LID - GRAY	4/CS
7745-6	44 GAL. LID - RED	4/CS



## Gator® Anchor Dolly

Structural foam construction with 3" quiet, non-marking casters.

ITEM	DESCRIPTION	CS QTY
7708	BLACK	2/CS

## Bus Box 7"

9.79 Gallon capacity. These sturdy bus boxes have a large capacity. NSF Standard 2 listed and approved.

ITEM	DESCRIPTION	CS QTY
BT700-12	WHITE	12/CS
BT703	GRAY	180/PALLET
BT703-12	GRAY	12/CS
BT704	BROWN	180/PALLET
BT704-12	BROWN	12/CS
BT710	BLACK	180/PALLET
BT710-12	BLACK	12/CS
BT700	WHITE	180/PALLET







## keep yourself covered! Safety in Closed Spaces

The use of pesticides and chemicals could prove harmful if exposure occurs to bare skin or other areas of the body. Here are a couple tips to keep workers safe:

- Autoclave users should wear splash goggles, non-asbestos containing hot mitts and apron, closed-toe shoes, long pants, and a long-sleeved shirt.
- Working with agricultural chemicals or handling treated items can require respirators and chemically resistant PPE as specified by the chemical label.
- PPE for early entry into any greenhouse or growth chamber that has been treated with a pesticide includes long pants, long-sleeved shirts, and closed-toe shoes.

## PolyLite Coveralls, Pants and Hoods

These disposable polypropylene garments are ideal for use in non-hazardous environments.

- Made of cool, comfortable and lightweight polypropylene
- Suggested applications are: hospitals, clinics, laboratories, food processing facilities and painting applications
- Garments are available in white and blue

### PolyLite® Coverall, Zipper Front, Elastic Wrists & Ankles

ITEM	SIZE	COLOR	CASE QTY.	MIN. ORDER
M1200-2X	2 X-LARGE	POLYPROPYLENE WHITE	25/CS	1 CS
M1200-3X	3 X-LARGE	POLYPROPYLENE WHITE	25/CS	1 CS
M1200-4X	4 X-LARGE	POLYPROPYLENE WHITE	25/CS	1 CS
M1200-5X	5 X-LARGE	POLYPROPYLENE WHITE	25/CS	1 CS
M1200-6X	6 X-LARGE	POLYPROPYLENE WHITE	25/CS	1 CS
M1200-S	SMALL	POLYPROPYLENE WHITE	25/CS	1 CS
M1200-M	MEDIUM	POLYPROPYLENE WHITE	25/CS	1 CS
M1200-L	LARGE	POLYPROPYLENE WHITE	25/CS	1 CS
M1200-XL	X-LARGE	POLYPROPYLENE WHITE	25/CS	1 CS
M1200B-L	LARGE	POLYPROPYLENE BLUE	25/CS	1 CS
M1200B-M	MEDIUM	POLYPROPYLENE BLUE	25/CS	1 CS
M1200B-S	SMALL	POLYPROPYLENE BLUE	25/CS	1 CS
M1200B-XL	X-LARGE	POLYPROPYLENE BLUE	25/CS	1 CS
M1200B-2X	2 X-LARGE	POLYPROPYLENE BLUE	25/CS	1 CS
M1200B-3X	3 X-LARGE	POLYPROPYLENE BLUE	25/CS	1 CS
M1200B-4X	4 X-LARGE	POLYPROPYLENE BLUE	25/CS	1 CS
M1200B-5X	5 X-LARGE	POLYPROPYLENE BLUE	25/CS	1 CS
M1200B-6X	6 X-LARGE	POLYPROPYLENE BLUE	25/CS	1 CS
M1200B-7X	7 X-LARGE	POLYPROPYLENE BLUE	25/CS	1 CS

### PolyLite® Coverall, Zipper Front w/Attached Hood

ITEM	SIZE	COLOR	CASE QTY.	MIN. ORDER
M1500-2X	2 X-LARGE	POLYPROPYLENE WHITE	25/CS	1 CS
M1500-3X	3 X-LARGE	POLYPROPYLENE WHITE	25/CS	1 CS
M1500-4X	4 X-LARGE	POLYPROPYLENE WHITE	25/CS	1 CS
M1500-5X	5 X-LARGE	POLYPROPYLENE WHITE	25/CS	1 CS
M1500-6X	6 X-LARGE	POLYPROPYLENE WHITE	25/CS	1 CS
M1500-L	LARGE	POLYPROPYLENE WHITE	25/CS	1 CS
M1500-M	MEDIUM	POLYPROPYLENE WHITE	25/CS	1 CS
M1500-S	SMALL	POLYPROPYLENE WHITE	25/CS	1 CS
M1500-XL	X-LARGE	POLYPROPYLENE WHITE	25/CS	1 CS
M1500B-2X	2 X-LARGE	POLYPROPYLENE BLUE	25/CS	1 CS
M1500B-3X	3 X-LARGE	POLYPROPYLENE BLUE	25/CS	1 CS
M1500B-4X	4 X-LARGE	POLYPROPYLENE BLUE	25/CS	1 CS
M1500B-5X	5 X-LARGE	POLYPROPYLENE BLUE	25/CS	1 CS
M1500B-6X	6 X-LARGE	POLYPROPYLENE BLUE	25/CS	1 CS
M1500B-L	LARGE	POLYPROPYLENE BLUE	25/CS	1 CS
M1500B-M	MEDIUM	POLYPROPYLENE BLUE	25/CS	1 CS
M1500B-S	SMALL	POLYPROPYLENE BLUE	25/CS	1 CS
M1500B-XL	X-LARGE	POLYPROPYLENE BLUE	25/CS	1 CS

### PolyLite® Coverall, Zipper Front

ITEM	SIZE	COLOR	CASE QTY.	MIN. ORDER
M1100-S	SMALL	POLYPROPYLENE WHITE	25/CS	1 CS
M1100-M	MEDIUM	POLYPROPYLENE WHITE	25/CS	1 CS
M1100-L	LARGE	POLYPROPYLENE WHITE	25/CS	1 CS
M1100-XL	X-LARGE	POLYPROPYLENE WHITE	25/CS	1 CS
M1100-2X	2 X-LARGE	POLYPROPYLENE WHITE	25/CS	1 CS
M1100-3X	3 X-LARGE	POLYPROPYLENE WHITE	25/CS	1 CS
M1100-4X	4 X-LARGE	POLYPROPYLENE WHITE	25/CS	1 CS
M1100-5X	5 X-LARGE	POLYPROPYLENE WHITE	25/CS	1 CS

## ProLite Coveralls

These garments offer high strength and toughness, yet are soft, comfortable and affordable.

- Polycoated spunbond fabric acts as a particulate barrier providing maximum fluid protection
- Garments are available in white
- Available sizes: S - 5XL - 25/cs

### ProLite® PE Coated Polypro Coverall, Zipper Front

ITEM	SIZE	COLOR	CASE QTY.	MIN. ORDER
M1130-S	SMALL	WHITE	25/CS	1 CS
M1130-M	MEDIUM	WHITE	25/CS	1 CS
M1130-L	LARGE	WHITE	25/CS	1 CS
M1130-XL	X-LARGE	WHITE	25/CS	1 CS
M1130-2X	2 X-LARGE	WHITE	25/CS	1 CS
M1130-3X	3 X-LARGE	WHITE	25/CS	1 CS
M1130-4X	4 X-LARGE	WHITE	25/CS	1 CS
M1130-5X	5 X-LARGE	WHITE	25/CS	1 CS
M1130-6X	6 X-LARGE	WHITE	25/CS	1 CS

### ProLite® PE Coated Polypro Coverall, Zipper Front, Elastic Wrists & Ankles

ITEM	SIZE	COLOR	CASE QTY.	MIN. ORDER
M1230-S	SMALL	WHITE	25/CS	1 CS
M1230-M	MEDIUM	WHITE	25/CS	1 CS
M1230-L	LARGE	WHITE	25/CS	1 CS
M1230-XL	X-LARGE	WHITE	25/CS	1 CS
M1230-2X	2 X-LARGE	WHITE	25/CS	1 CS
M1230-3X	3 X-LARGE	WHITE	25/CS	1 CS
M1230-4X	4 X-LARGE	WHITE	25/CS	1 CS

## Alternative Aprons

These garments offer great protection from a wide range of chemicals, animal fats and potential exposure to grease.

### ProLite® PE Coated Polypro Apron, 28 x 36, Sewn Ties, White

ITEM	SIZE	COLOR	CASE QTY.	MIN. ORDER
M2510		WHITE	100/CS	1 CS

### Coat Apron, 6 Mil, X-Large

ITEM	SIZE	COLOR	CASE QTY.	MIN. ORDER
MCA-6-2X		BLUE	3 DZ/CS	1 CS
MCA-6-XL		BLUE	3 DZ/CS	1 CS





## Vinyl Sleeves

These garments offer great protection from a wide range of chemicals, animal fats and potential exposure to grease.

### 8 Mil Vinyl Sleeves

ITEM	SIZE	COLOR	CASE QTY.	MIN. ORDER
MVB-8HS	18"	VINYL BLUE	12 DZ PR/CS	1 CS

## Vinyl Aprons Unhemmed

These garments offer great protection from a wide range of chemicals, animal fats and potential exposure to grease.

### Urethane Apron, 35x55, String Ties, Yellow

ITEM	SIZE	COLOR	CASE QTY.	MIN. ORDER
MUB-45		BLUE	6 DZ/CS	1 CS

### 6 Mil Unhemmed Vinyl Apron, 35x50, String Ties, Blue

ITEM	SIZE	COLOR	CASE QTY.	MIN. ORDER
MUB-50		VINYL BLUE	6 DZ/CS	1 CS







**impact**  
Everything.

1.800.333.1541  
impact-products.com  
© 2018 Impact Products, LLC

AGRCAT1810